

PTC® Creo® Options Modeler Extension

Create and Validate Product Platforms

The PTC® Creo® Options Modeler Extension (OMX) is a fully integrated add-on product to PTC Creo Parametric™, created for design engineers who need all the power of a parametric 3D CAD solution, along with the ability to create and validate product platforms.

Design engineers need to respond to many challenges when developing products, especially when working in dynamic, competitive environments with increasingly diverse and varied needs of new markets or new customer opportunities. By using a modular product approach to design, engineers can reduce complexity while still providing a broad range of product offerings without significant increases in cost.

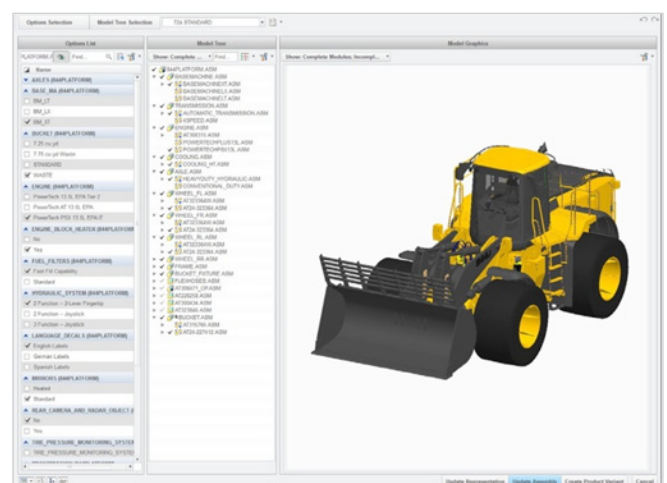
With PTC Creo OMX, designers can quickly create and validate any customer-specific product by generating modular product architecture and defining how product modules interface and assemble. When combined with PTC Windchill®, PTC's product lifecycle management software, PTC Creo OMX enables manufacturers to generate and validate precise 3D representations of product configurations defined by an individual bill of materials (BOM).

The combination of PTC Creo OMX and PTC Creo Parametric enables designers to validate the resulting product by checking properties (e.g., the precise mass and center of gravity) and even checking and resolving critical areas, such as interference.

Key benefits

- Achieve faster design cycles by creating and validating product modules in 3D early in the design phase

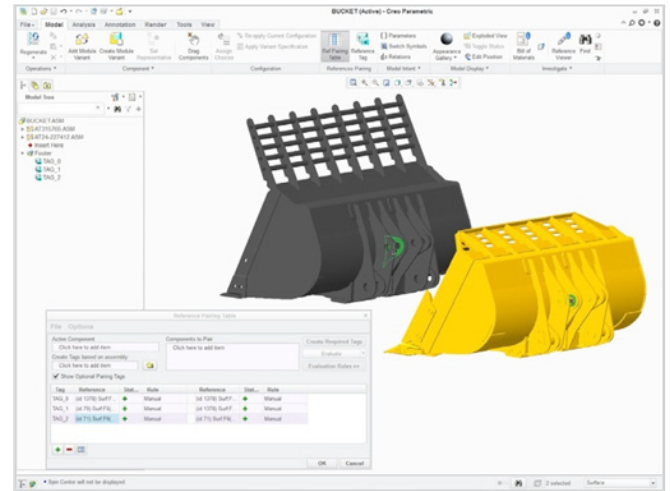
- Reduce process errors and engineering rework by directly reusing available 3D models from PTC Creo, as well as BOM and business logic for product configurations from PTC Windchill
- Automate the creation of any product by defining common architecture and product modules, and help manage how they interface and assemble
- Optimize products earlier by automating manually intensive, error-prone tasks
- Communicate precisely by sharing product designs earlier and receive feedback from other internal teams, suppliers, and customers



Couple allowable product options, parts structure, and 3D models

Capabilities and specifications

- Fully visualize and validate the modular product architecture
- View and interact with all relevant information in one integrated environment:
 - Modular product architecture
 - 3D models
- Select from available product modules and precisely visualize the resulting product in 3D
- Flexibly create and change the modular product architecture
 - Create the modular product architecture through a top-down or bottom-up design approach:
 - **Top-Down:** Ideal for creating new products. Create the top-level modular product architecture independent of individual modules and models*
 - **Bottom-Up:** Ideal for adding new product modules to existing products. Create individual modules independent of the top-level product architecture
- Create new modular product architectures by reusing existing products:
 - From CAD, directly use existing parts and assemblies from PTC Creo
 - From PLM, directly use individual BOM*
- Change, add, or remove module variants from the modular product architecture
- Accelerate assembly in 3D
- Define interfaces and assembly tags to make module variants interchangeable
- Create configurable modules to easily manage multiple options



Create configurable modules to easily manage multiple options

- Generate any modular product as a precise 3D representation; in PTC Creo Parametric, validate mass, center of gravity, interference, and other critical areas
- Use the resulting 3D model for downstream activities such as simulation and manufacturing
- Leverage existing BOM

* Requires PTC Windchill

Platform support and system requirements

Visit the [PTC support page](#) for the most up-to-date platform support and system requirements.

For more information, visit: www.PTC.com/product/creo

© 2014, PTC Inc. (PTC). All rights reserved. Information described herein is furnished for informational use only, is subject to change without notice, and should not be taken as a guarantee, commitment, condition or offer by PTC. PTC, the PTC logo, Product & Service Advantage, Creo, Elements/Direct, Windchill, Mathcad and all other PTC product names and logos are trademarks or registered trademarks of PTC and/or its subsidiaries in the United States and other countries. All other product or company names are property of their respective owners. The timing of any product release, including any features or functionality, is subject to change at PTC's discretion.

J3110 - Creo Options Modeler Extension DS - EN - 0414